

AN ISO 9001 : 2015 CERTIFIED COMPANY



UPVC & CPVC PIPE & FITTINGS



PVC Pipes SWR Pipes | Pvc Garden Pipe | Solvent Cement


**UPVC
PLUMBING PIPE
40 SCH**

SIZE (3 MTR)	PACKING	WEIGHT PER PIPE	TOTAL BDL (WT.)
1/2"	50	0.750	37.50
3/4"	35	0.950	33.25
1"	25	1.400	35.00
1 1/4"	15	2.000	30.00
1 1/2"	15	2.350	35.25
2"	10	3.000	30.00


**UPVC
PLUMBING PIPE
40 SCH**

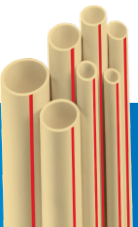
SIZE (6 MTR)	PACKING	WEIGHT PER PIPE	TOTAL BDL (WT.)
1/2"	30	1.500	45.00
3/4"	25	1.900	47.50
1"	15	2.800	42.00
1 1/4"	10	4.000	40.00
1 1/2"	10	4.700	47.00
2"	8	6.000	48.00


**UPVC
PLUMBING PIPE
80 SCH**

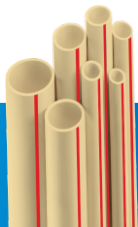
SIZE (3 MTR)	PACKING	WEIGHT PER PIPE	TOTAL BDL (WT.)
1/2"	50	0.900	45.00
3/4"	35	1.250	43.75
1"	25	1.750	43.75
1 1/4"	15	2.500	37.50
1 1/2"	15	3.000	45.00
2"	10	4.000	40.00


**UPVC
PLUMBING PIPE
80 SCH**

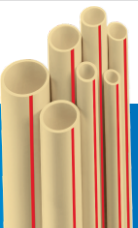
SIZE (6 MTR)	PACKING	WEIGHT PER PIPE	TOTAL BDL (WT.)
1/2"	30	1.800	54.00
3/4"	25	2.500	62.50
1"	15	3.500	52.50
1 1/4"	10	5.000	50.00
1 1/2"	10	6.000	60.00
2"	8	8.000	64.00


**CPVC
PLUMBING PIPE
SDR 11**

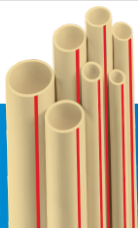
SIZE (3 MTR)	PACKING	WEIGHT PER PIPE	TOTAL BDL (WT.)
1/2"	50	0.420	21.00
3/4"	35	0.650	22.75
1"	25	1.000	25.00
1 1/4"	15	1.500	22.50
1 1/2"	15	2.000	30.00
2"	10	3.250	32.50


**CPVC
PLUMBING PIPE
SDR 11**

SIZE (5 MTR)	PACKING	WEIGHT PER PIPE	TOTAL BDL (WT.)
1/2"	30	0.680	20.40
3/4"	25	1.100	27.50
1"	15	1.700	25.50
1 1/4"	10	2.500	25.00
1 1/2"	10	3.300	33.00
2"	8	5.400	43.20


**CPVC
PLUMBING PIPE
SDR 13.5**

SIZE (3 MTR)	PACKING	WEIGHT PER PIPE	TOTAL BDL (WT.)
1/2"	50	0.350	17.50
3/4"	35	0.550	19.25
1"	25	0.850	21.25
1 1/4"	15	1.300	19.50
1 1/2"	15	1.700	25.50
2"	10	2.900	29.00


**CPVC
PLUMBING PIPE
SDR 13.5**

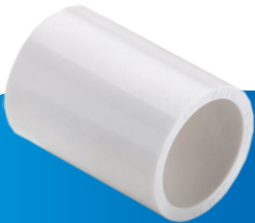
SIZE (5 MTR)	PACKING	WEIGHT PER PIPE	TOTAL BDL (WT.)
1/2"	30	0.600	18.00
3/4"	25	0.920	23.00
1"	15	1.400	21.00
1 1/4"	10	2.160	21.60
1 1/2"	10	2.800	28.00
2"	8	4.800	38.40


**UPVC
ELBOW**

SIZE	INNER PACKING	OUTTER PACKING	RATE
1/2"	100X6=600	600X3=1800	7.30
3/4"	50X7=350	350X3=1050	11.60
1"	40X5=200	200X3=600	18.30
1 1/4"	25X5=125	125X3=375	36.95
1 1/2"	15X6=90	90X3=270	47.75
2"	10X5=50	50X3=150	65.30


**UPVC
TEE**

SIZE	INNER PACKING	OUTTER PACKING	RATE
1/2"	50X8=400	400X3=1200	11.95
3/4"	25X10=250	250X3=750	15.90
1"	25X6=150	150X3=450	26.50
1 1/4"	15X5=75	75X3=225	48.85
1 1/2"	12X4=48	48X3=144	64.70
2"	7X5=35	35X3=105	91.30


**UPVC
COUPLER**

SIZE	INNER PACKING	OUTTER PACKING	RATE
1/2"	100X8=800	800X3=2400	6.35
3/4"	100X5=500	500X3=1500	9.10
1"	50X6=300	300X3=900	13.30
1 1/4"	25X7=175	175X3=525	24.45
1 1/2"	25X5=125	125X3=375	30.75
2"	15X5=75	75X3=225	41.70


**UPVC
END CAP**

SIZE	INNER PACKING	OUTTER PACKING	RATE
1/2"	100X16=1600	1600X3=4800	4.50
3/4"	100X7=700	700X3=2100	6.60
1"	50X10=500	500X3=1500	10.00
1 1/4"	40X8=320	320X3=960	19.65
1 1/2"	30X8=240	240X3=720	29.50
2"	20X7=140	140X3=420	34.00


**UPVC
M.T.A.**

SIZE	INNER PACKING	OUTTER PACKING	RATE
1/2"	100X10=1000	1000X3=3000	5.10
3/4"	50X12=600	600X3=1800	7.35
1"	50X8=400	400X3=1200	11.20
1 1/4"	40X6=240	240X3=720	22.30
1 1/2"	30X5=150	150X3=450	29.75
2"	15X10=150	150X3=450	47.80


**UPVC
F.T.A.**

SIZE	INNER PACKING	OUTTER PACKING	RATE
1/2"	100X9=900	900X3=2700	5.40
3/4"	100X5=500	500X3=1500	9.00
1"	50X6=300	300X3=900	13.80
1 1/4"	40X5=200	200X3=600	27.10
1 1/2"	30X4=120	120X3=360	35.60
2"	10X12=120	120X3=360	53.10


**UPVC
UNION**

SIZE	INNER PACKING	OUTTER PACKING	RATE
1/2"	50X8=400	400X3=1200	22.20
3/4"	30X8=240	240X3=720	30.40
1"	25X6=150	150X3=450	42.50
1 1/4"	20X5=100	100X3=300	72.20
1 1/2"	10X7=70	70X3=210	87.10
2"	8X6=48	48X3=144	142.80


**UPVC
TANK NIPPLE
(THREAD TYPE)**

SIZE	INNER PACKING	OUTTER PACKING	RATE
1/2"	50X8=400	400X3=1200	18.10
3/4"	50X6=300	300X3=900	24.55
1"	25X7=175	175X3=525	36.65
1 1/4"	20X6=120	120X3=360	58.40
1 1/2"	20X5=100	100X3=300	85.00
2"	12X5=60	60X3=180	116.80


**UPVC
TANK NIPPLE
(SOKET TYPE)**

SIZE	INNER PACKING	OUTTER PACKING	RATE
1/2"	50X10=500	500X3=1500	18.30
3/4"	50X6=300	300X3=900	23.35
1"	25X8=200	200X3=600	35.75
1 1/4"	20X6=120	120X3=360	60.50
1 1/2"	20X5=100	100X3=300	82.80
2"	12X5=60	60X3=180	111.50


**UPVC
PIPE TANK NIPPLE**

SIZE	INNER PACKING	OUTTER PACKING	RATE
1/2"	50X8=400	400X3=1200	24.50
3/4"	50X5=250	250X3=750	30.75
1"	25X6=150	150X3=450	38.15


**UPVC
THREAD ELBOW**

SIZE	INNER PACKING	OUTTER PACKING	RATE
1/2"	50X10=500	500X3=1500	13.80
3/4"	50X7=350	350X3=1050	20.20


**UPVC
REDUCE ELBOW**

SIZE	INNER PACKING	OUTTER PACKING	RATE
3/4"X1/2"	50X8=400	400X3=1200	15.40
1"X1/2"	50X5=250	250X3=750	19.35
1"X3/4"	50X5=250	250X3=750	23.80


**UPVC
REDUCE TEE**

SIZE	INNER PACKING	OUTTER PACKING	RATE
3/4X1/2"	40X7=280	280X3=840	16.40
1X1/2"	25X7=175	175X3=525	25.45
1X3/4"	40X4=160	160X3=480	26.55
1 1/4X1/2"	20X5=100	100X3=300	48.85
1 1/4X3/4"	15X6=90	90X3=270	51.00
1 1/4X1"	15X6=90	90X3=270	53.10
1 1/2X1/2"	15X4=60	60X3=180	57.85
1 1/2X3/4"	12X6=72	72X3=216	59.25
1 1/2X1"	12X6=72	72X3=216	61.60
1 1/2X1 1/4"	12X5=60	60X3=180	64.50
2X1/2"	7X6=42	42X3=126	85.50
2X3/4"	7X6=42	42X3=126	86.00
2X1"	8X5=40	40X3=120	88.15
2X1 1/4"	7X5=35	35X3=105	89.70
2X1 1/2"	7X5=35	35X3=105	91.00


**UPVC
REDUCER**

SIZE	INNER PACKING	OUTTER PACKING	RATE
3/4X1/2"	50X10=500	500X3=1500	8.50
1X1/2"	50X7=350	350X3=1050	12.85
1X3/4"	50X7=350	350X3=1050	14.30
1 1/4X1/2"	25X10=250	250X3=750	21.80
1 1/4X3/4"	25X10=250	250X3=750	23.35
1 1/4X1"	25X8=200	200X3=600	26.00
1 1/2X1/2"	25X7=175	175X3=525	28.35
1 1/2X3/4"	25X7=175	175X3=525	30.75
1 1/2X1"	25X6=150	150X3=450	31.85
1 1/2X1 1/4"	20X6=120	120X3=360	32.90
2X1/2"	20X6=120	120X3=360	37.00
2X3/4"	20X6=120	120X3=360	37.70
2X1"	20X6=120	120X3=360	39.30
2X1 1/4"	15X7=105	105X3=315	40.35
2X1 1/2"	15X6=90	90X3=270	41.95


**UPVC
BUSH**

SIZE	INNER PACKING	OUTTER PACKING	RATE
3/4X1/2"	100X12=1200	1200X3=3600	3.75
1X1/2"	100X7=700	700X3=2100	7.75
1X3/4"	100X7=700	700X3=2100	7.35
1 1/4X1/2"	50X8=400	400X3=1200	23.35
1 1/4X3/4"	50X8=400	400X3=1200	22.30
1 1/4X1"	50X8=400	400X3=1200	19.65
1 1/2X1/2"	50X6=300	300X3=900	31.30
1 1/2X3/4"	50X6=300	300X3=900	29.50
1 1/2X1"	50X6=300	300X3=900	27.55
1 1/2X1 1/4"	50X6=300	300X3=900	28.15


**UPVC
45° ELBOW**

SIZE	INNER PACKING	OUTTER PACKING	RATE
1/2"	100X6=600	600X3=1800	10.40
3/4"	50X8=400	400X3=1200	15.15
1"	30X8=240	240X3=720	24.45
1 1/4"	25X5=125	125X3=375	47.80
1 1/2"	15X6=90	90X3=270	57.35


**UPVC
BALL VALVE
(SHORT)**

SIZE	PACKING IN BAG	RATE
1/2"	612	50.00
3/4"	360	60.00
1"	276	88.00
1 1/4"	150	121.00
1 1/2"	100	202.00
2"	63	295.00


**UPVC
BALL VALVE
(LONG)**

SIZE	PACKING IN BAG	RATE
1/2"	612	51.00
3/4"	360	62.00
1"	276	90.00
1 1/4"	150	124.00
1 1/2"	100	270.00
2"	63	300.00


**UPVC
Four WAY**

SIZE	INNER PACKING	OUTTER PACKING	RATE
1/2"	40X7=280	280X3=840	23.35
3/4"	25X7=175	175X3=525	31.35
1"	20X5=100	100X3=300	43.55


**UPVC
STEP OVER BAND**

SIZE	INNER PACKING	OUTTER PACKING	RATE
1/2"	25X12=300	300X3=900	40.35
3/4"	20X8=160	160X3=480	51.50
1"	15X10=150	150X3=450	73.00
1 1/4"			94.50
1 1/2"			114.70


METAL CLAMP

SIZE	INNER PACKING	OUTTER PACKING	RATE
1/2"	3000	3000x3=9000	5.60
3/4"	2200	2200x3=6600	6.40
1"	1800	1800x3=5400	7.70
1 1/4"	1400	1400x3=4200	8.75
1 1/2"	1000	1000x3=3000	9.75
2"	800	800x3=2400	11.15


NAIL CLAMP

SIZE	INNER PACKING	OUTTER PACKING	RATE
1/2"	3000	3000x3=9000	5.80
3/4"	2200	2200x3=6600	9.20
1"	1800	1800x3=5400	12.60
1 1/4"	1400	1400x3=4200	16.90
1 1/2"	1000	1000x3=3000	21.40


SOLVENT

SIZE	PACKING	BOX	RATE
50 ML	30	30X16=480	70.00
118 ML	24	24X10=240	107.00
237 ML	15	15X10=150	183.00


LONG PLUG

SIZE	INNER PACKING	OUTTER PACKING	RATE
1/2"	100X14=1400	1400X3=4200	2.30


**UPVC
BRASS M.T.A.**

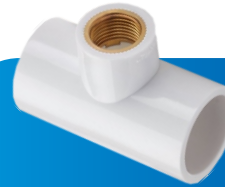
SIZE	INNER PACKING	OUTTER PACKING	RATE
1/2"	50X6=300	300X2=600	53.00
3/4"	40X6=240	240X2=480	79.65
1"	30X4=120	120X2=240	121.35
1 1/4"	16X5=80	80X2=160	238.95
1 1/2"	12X5=60	60X2=120	329.25
2"	5X5=25	25X2=50	520.40


**UPVC
BRASS F.T.A.**

SIZE	INNER PACKING	OUTTER PACKING	RATE
1/2"	50X7=350	350X2=700	36.10
3/4"	50X5=250	250X2=500	61.55
1"	25X6=150	150X2=300	82.85
1 1/4"	20X3=60	60X2=120	174.15
1 1/2"	15X4=60	60X2=120	228.35
2"	5X5=25	25X2=50	451.35


**UPVC
BRASS ELBOW**

SIZE	INNER PACKING	OUTTER PACKING	RATE
1/2"	50X5=250	250X2=500	38.55
3/4"	50X4=200	200X2=400	61.00
1"	25X4=100	100X2=200	90.30


**UPVC
BRASS TEE**

SIZE	INNER PACKING	OUTTER PACKING	RATE
1/2"	50X4=200	200X2=400	44.15
3/4"	25X5=125	125X2=250	64.90
1"	20X3=60	60X2=120	97.70


**UPVC
BRASS REDUCE
ELBOW**

SIZE	INNER PACKING	OUTTER PACKING	RATE
3/4X1/2"	50X4=200	200X2=400	47.80
1X1/2"	25X5=125	125X2=250	52.00
1X3/4"	25X5=125	125X2=250	80.90


**UPVC
BRASS REDUCE
TEE**

SIZE	INNER PACKING	OUTTER PACKING	RATE
3/4X1/2"	40X4=160	160X2=320	55.00
1X1/2"	25X4=100	100X2=200	57.00
1X3/4"	25X3=75	75X2=150	90.25


**UPVC
BRASS REDUCE
M.T.A.**

SIZE	INNER PACKING	OUTTER PACKING	RATE
3/4X1/2"	50X5=250	250X2=500	65.85
1X1/2"	50X4=200	200X2=400	69.25
1X3/4"	25X6=150	150X2=300	91.00


**UPVC
BRASS REDUCE
F.T.A.**

SIZE	INNER PACKING	OUTTER PACKING	RATE
3/4X1/2"	50X5=250	250X2=500	42.75
1X1/2"	50X5=250	250X2=500	46.00
1X3/4"	50X4=200	200X2=400	68.50



UnifyTM
POLYMERS

UPVC & CPVC PIPE & FITTINGS

 **UNIFY POLYMERS**

Dist. Rajkot - 360311

 unifypolymers2022@gmail.com



GROW MORE TREE